

REALvision embrace installation and activation guide

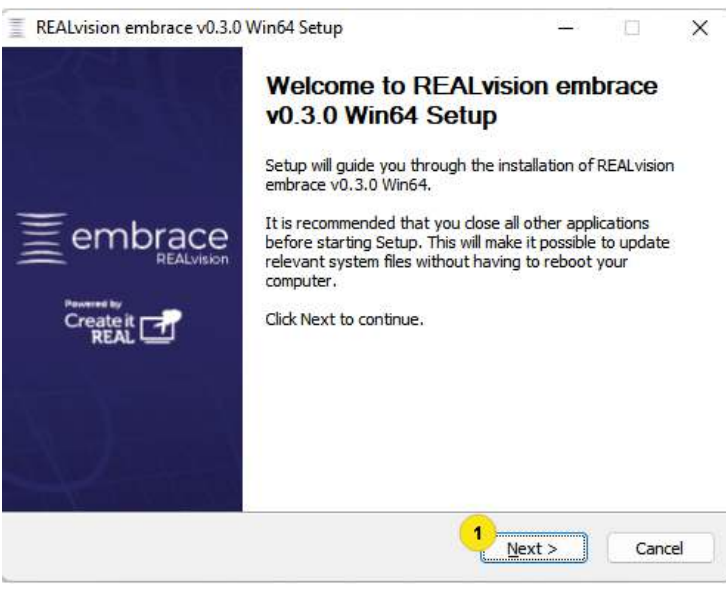
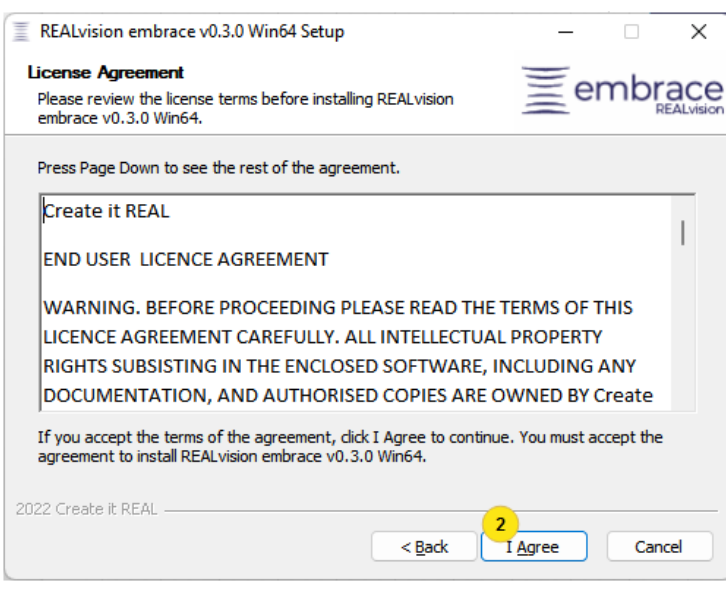
Create it REAL A/S

Hjulmagervej 28
9000, Aalborg

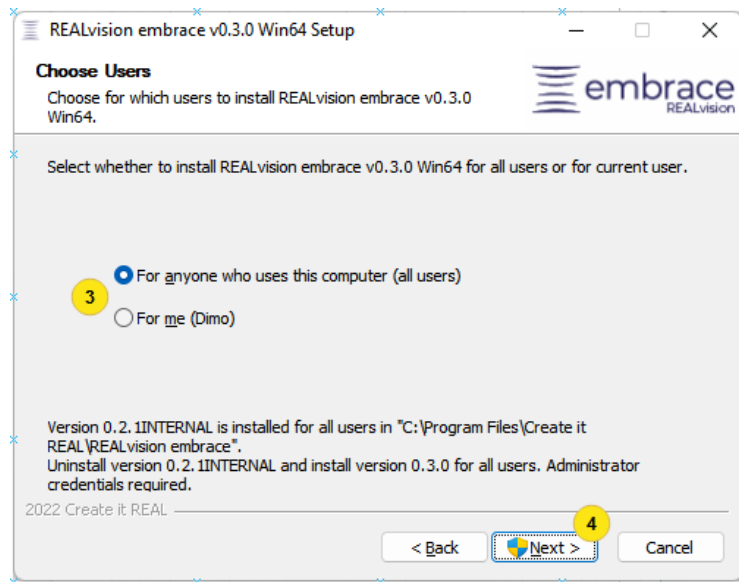
support@createitreal.com

Install

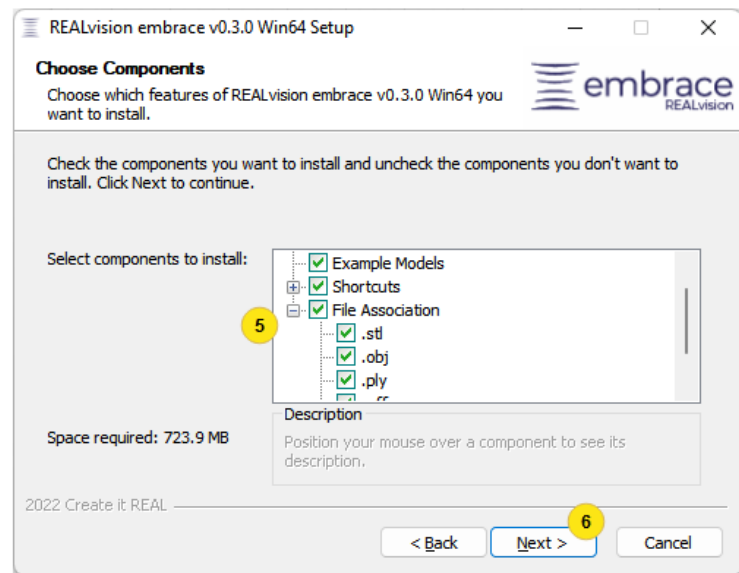
Installation process begins by starting the *REALvision embrace_Setup.exe* file

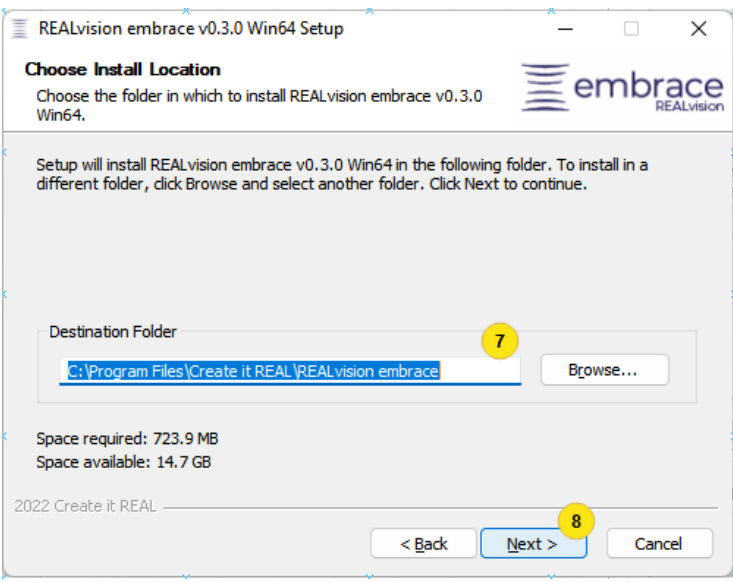
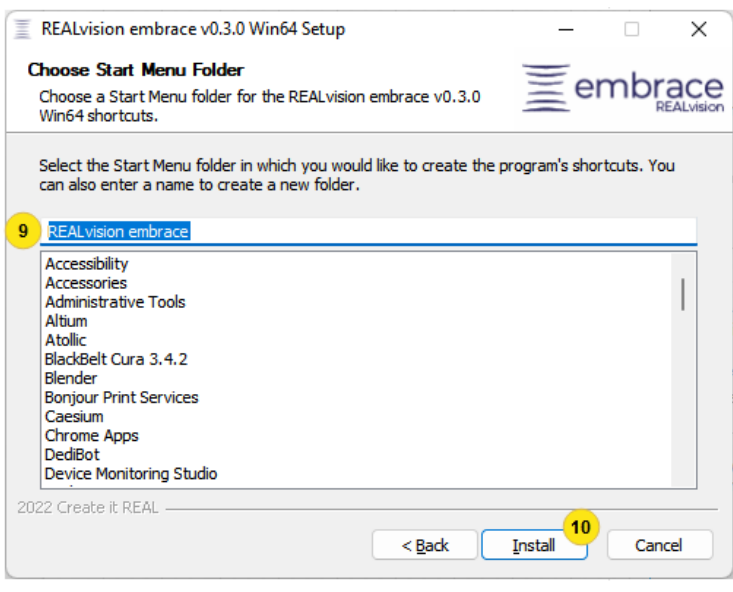
<p>1. Click on <i>Next</i> to begin the installation process</p>	
<p>2. Read the License agreement and press on <i>I agree</i></p>	

3. Select who should have access to the problem - all users, or only the current user.
4. Then press *Next*



5. Select the components you would like installed and the files you would like to associate with the software.
6. Click *Next* to continue



<ol style="list-style-type: none"> 7. Choose the location on the hard drive where the software will be installed. 8. Click <i>Next</i> to continue 	
<ol style="list-style-type: none"> 9. Chose the name of the folder in the start menu 10. Click <i>Install</i> to start the installation 	

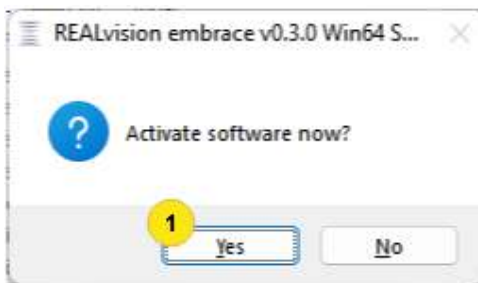
Activate

REALvision embrace needs activation using a serial key in order to run. This can happen during the installation process, or afterwards from the **Please note that for the activation process you need access to the internet.**

Activate during installation

During installation, you will be asked if you want to activate the software now. Click on **YES** to proceed with activating.

Note: if you click No, you can activate later through REALvision embrace (see below)

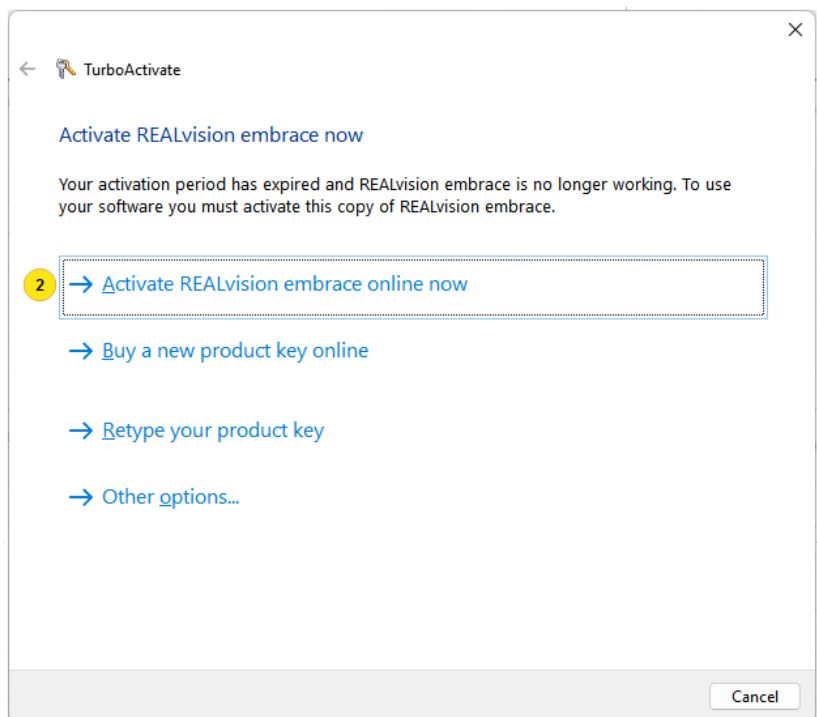


- Click on *Activate REALvision embrace online now*.

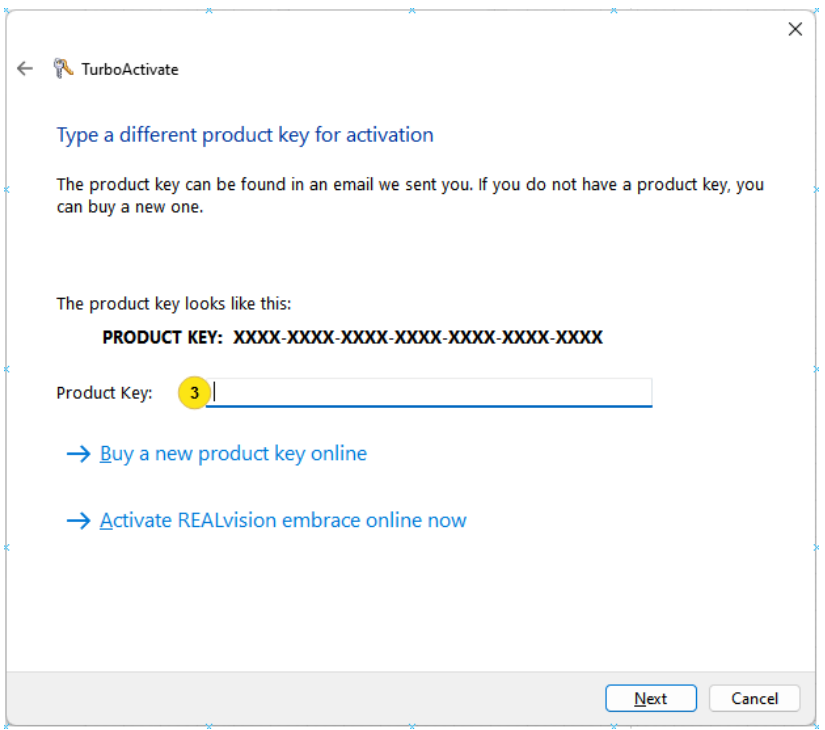
IMPORTANT: You need internet connection for this action

- If you don't have a serial key, click on *Buy a new product key online*.

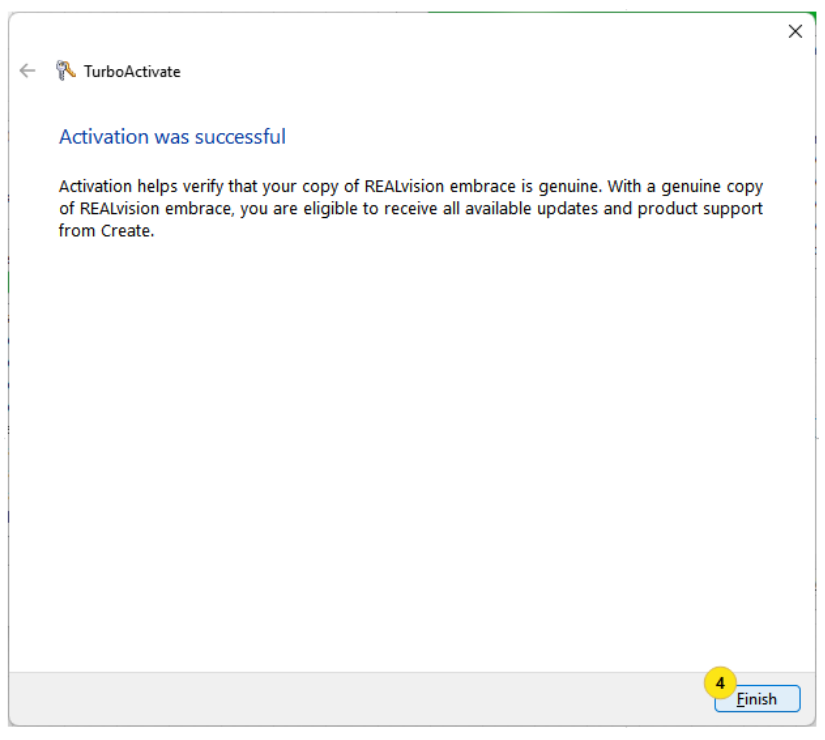
- In case you have received a new key because your previous one has expired, or for other reasons, click on *Retype your product key*.



In the *Product key* field, type the unique 28-letter serial key provided to you by the manufacturer or sales representative.



Activation was successful is the message that will appear if no issues with the activation process were encountered. Click on *Finish* to finalize the process

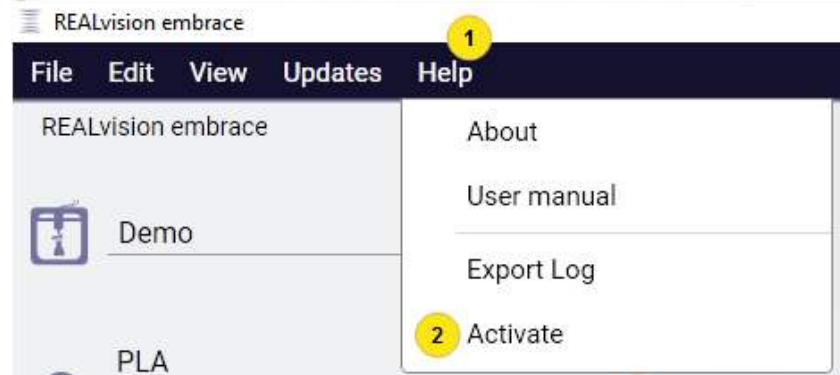


Activate through REALvision embrace

If the software is installed, but not activated, activation can be done through the REALvision embrace user interface.

In REALvision embrace, select *Help* from the task bar in the top left corner.

Click on Activate

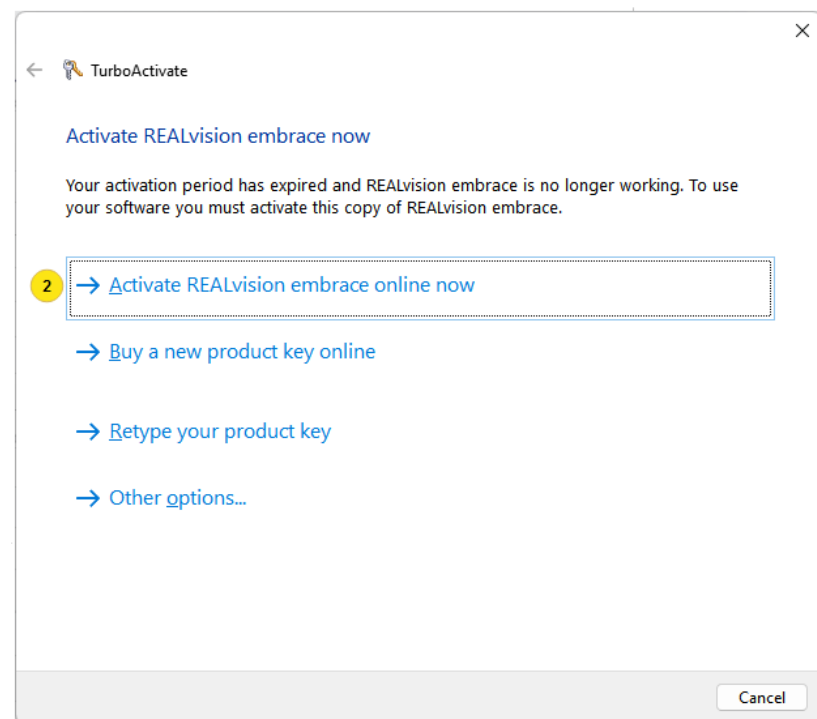


- Click on *Activate REALvision embrace online now*.

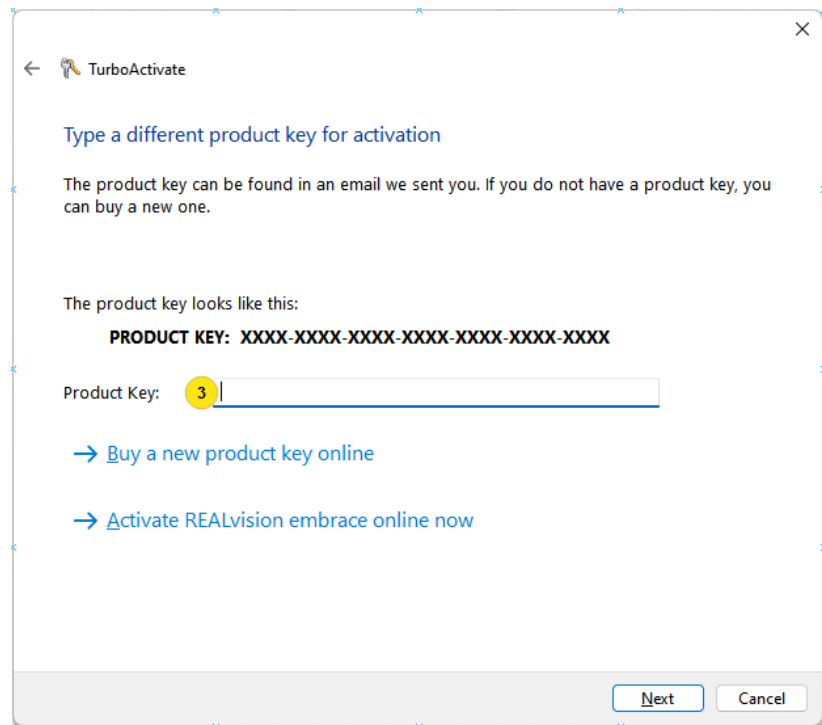
IMPORTANT: You need internet connection for this action

- If you don't have a serial key, click on *Buy a new product key online*.

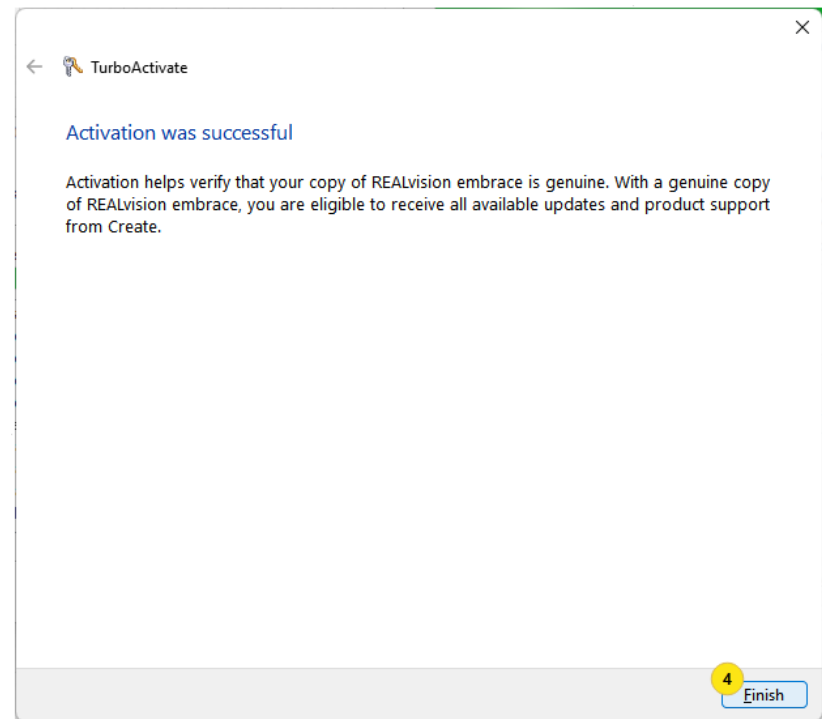
- In case you have received a new key because your previous one has expired, or for other reasons, click on *Retype your product key*.



In the *Product key* field, type the unique 28-letter serial key provided to you by the manufacturer or sales representative.




Activation was successful is the message that will appear if no issues with the activation process were encountered. Click on *Finish* to finalize the process



Deactivate software

If you have received a new serial key that enables more features, or simply would like to cancel the activation of the software on this computer (for example, in order to activate on another computer), this can be done by deactivating the software.

<p>To deactivate the software, select <i>Help</i> from the task bar in the top left corner.</p> <p>Click on <i>Deactivate</i>.</p> <p>Then activation with the new serial key can begin (see Activation).</p>	
---	--