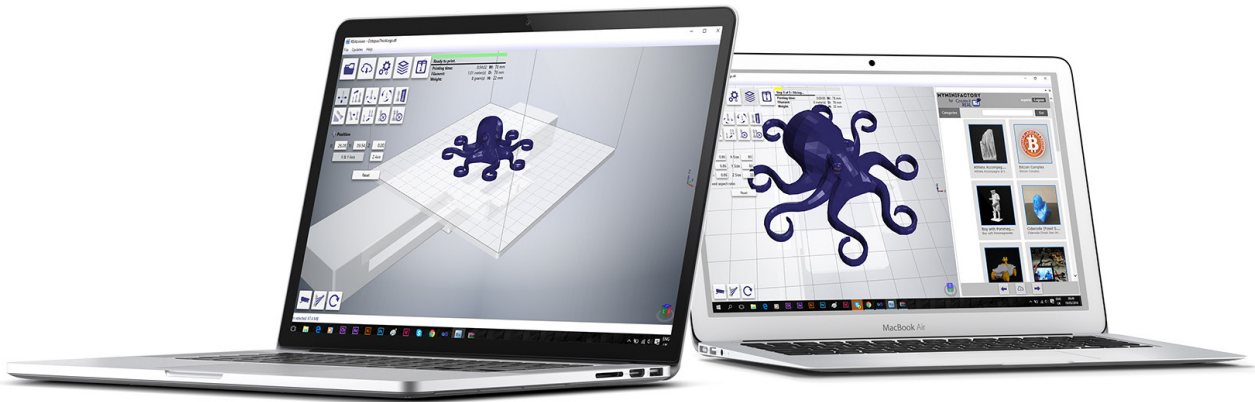


EASY TO USE SLICER FOR 3D PRINTER MANUFACTURERS

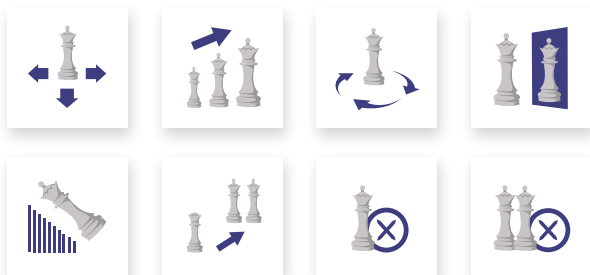


Are you looking for a better slicer to help your customers?

Despite the number of slicers available today your customers struggle to get the best out of your 3D printer. Too many features to manage lead them to frustration and complain about the your product. While you try to focus on sales development and work on your next model, your customers are left alone with too complex software they don't fully understand. Moreover, you do not control software updates, might be missing features and you cannot tweak the UI unless you hire dedicated engineers.

Get your branded, customised, worry-free slicer now!

REALvision has been developed to fix all these issues so you can offer the best 3D printing experience to your customers. Intuitive interface, 3D print in just a few clicks, we have hidden all the complexity and created the best solution to remove your pain. And because we believe each brand is unique, we let you decide which are the options you want available or not, put your logo and select your colour scheme to match your company look and feel.



Easy to use does not mean basic

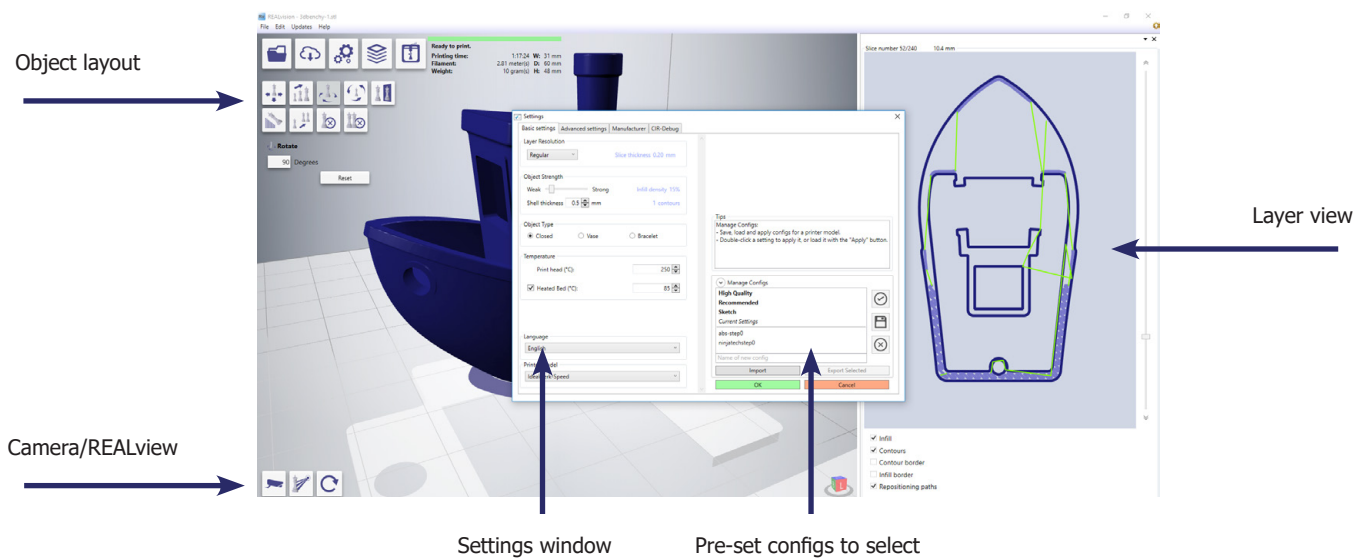
With REALvision, your customers will get the best print results, same or even better than with other slicers. The difference is that we automatically manage most settings that many users do not understand or care about changing. Most important is to 3D print as users expect it: fast and nice. But it does not mean you should not get full control of the printer. Experts will be pleased to play with up to 140 settings and make sure they get things done in no time.

Unique features to stand out of the crowd

On top standard features found in all slicers, we have developed unique features to create an even better experience for your customers.

- REALview is using Augmented Reality to preview your object in the real world at 1:1 scale. It is using your computer webcam and a small tracker (free to print) to display the object in your hands.
- Access to MyminiFactory online file repository, directly from the slicer. Simple and fast to get objects to print!
- Get all the latest and advanced infill type such as 3D Gyroid, Isomax... for optimized weight/strength object ratio.

REALVISION KEY FEATURES



For End- Users

- No more worries about which setting to use, select a pre-set config and slice!
- Simple access to thousands of free 3D designs thanks to MyMiniFactory integration
- Real printer bed design view for better visibility
- In-built troubleshooting guide with pictures to identify each printing problem and solution
- Access to expert options to fully control support, infill, speed and extruder settings
- Automatic object repair and simplification to guarantee smooth and efficient 3D printing
- Access to the latest infills like double gyroid, Isomax, gyroid lattice, skeleton for best weight/strength ratio

For 3D Printer manufacturers

- Printer configuration wizard to quickly setup your printer and define all H/W controls
- On demand new languages integration
- Printer bed design, colour scheme and logo insertion possibility
- Software updates and config files available online from the application
- In-built troubleshooting guide with pictures will reduce customers call to support team
- Dedicated Level 2 support team to help you or your customers if needed
- Attractive licensing offers
- Collaborative roadmap definition
- Upgrade possible to Create it REAL complete platform

REALvision technical specifications

| | |
|------------------------------------|--|
| Input format | STL, .obj |
| Output format | gcode, fcode |
| Languages | English, French, Chinese (Others on demand) |
| Operating systems | Windows Vista or later |
| Minimum system requirements | Intel® Pentium® 4 CPU 1 GB of RAM 500MB of available hard-disk space |

* Check out our video of [REALvision demo](#) and [REALview demo](#) !

Go the extra mile!!

If you want to go further with Create it REAL technology, contact us now to try our high end electronics and dedicated filament range for high speed printing and get more competitive advantages over your competitors!

KEEP IN TOUCH

<http://www.createitreal.com/>

<http://www.facebook.com/createitreal/>

<http://www.instagram.com/createitreal>

<http://www.twitter.com/CreateitREAL>

info@createitreal.com

+45 25 24 87 11 (Danish/English/French)